

NUESTRO COMPROMISO CON LA CALIDAD

En Ingeneo, la calidad es el eje sobre el que desarrollamos nuestros proyectos.

Nuestro objetivo es alcanzar la excelencia en todos y cada uno de los aspectos que envuelven nuestro trabajo y la satisfacción de nuestros clientes.

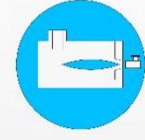
OUR COMMITMENT TO QUALITY

In Ingeneo, quality is the axis in which we develop our projects.

Our goal is to achieve excellence in each and every one of the aspects that involve our work and the satisfaction of our customers.



EQUIPOS DE COMBUSTIÓN
COMBUSTION EQUIPMENT



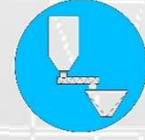
HORNOS INDUSTRIALES
INDUSTRIAL KILNS



INCINERACIÓN/CREMACIÓN
INCINERATION/CREMATION



RECUPERACIÓN DE CALOR
HEAT RECUPERATOR



TRANSPORTE Y MANIPULACIÓN DE SÓLIDOS
SOLIDS CONVEYING AND HANDLING



SOLUCIONES DE VAPOR
STEAM SOLUTIONS



MATERIALES RFRACTARIOS
REFRACTORY MATERIALS



DEPURACIÓN DE GASES
FLUE-GAS CLEANING

INGENEO

Solving Industrial Challenges

INGENEO EQUIPOS INDUSTRIALES, S.L.

Calle San Luis 15, 1º B
12001 Castellón (Spain)


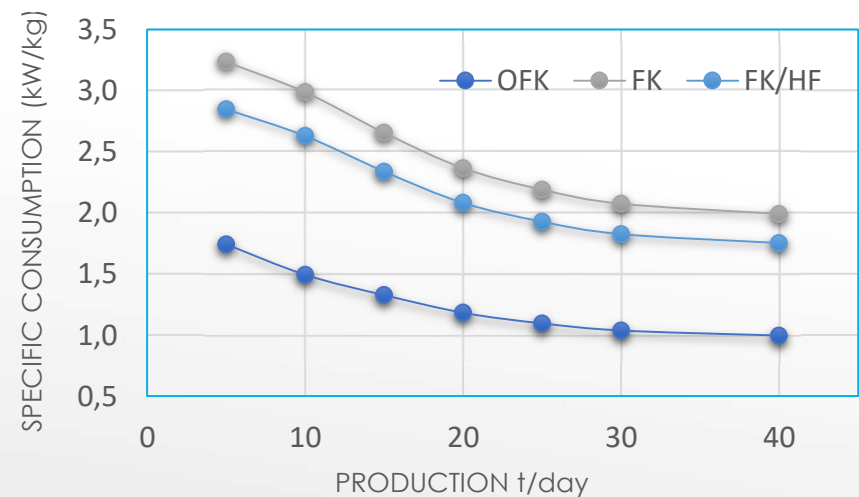
+34 964 107 140

info@ingeneo.tech

www.ingeneo.tech


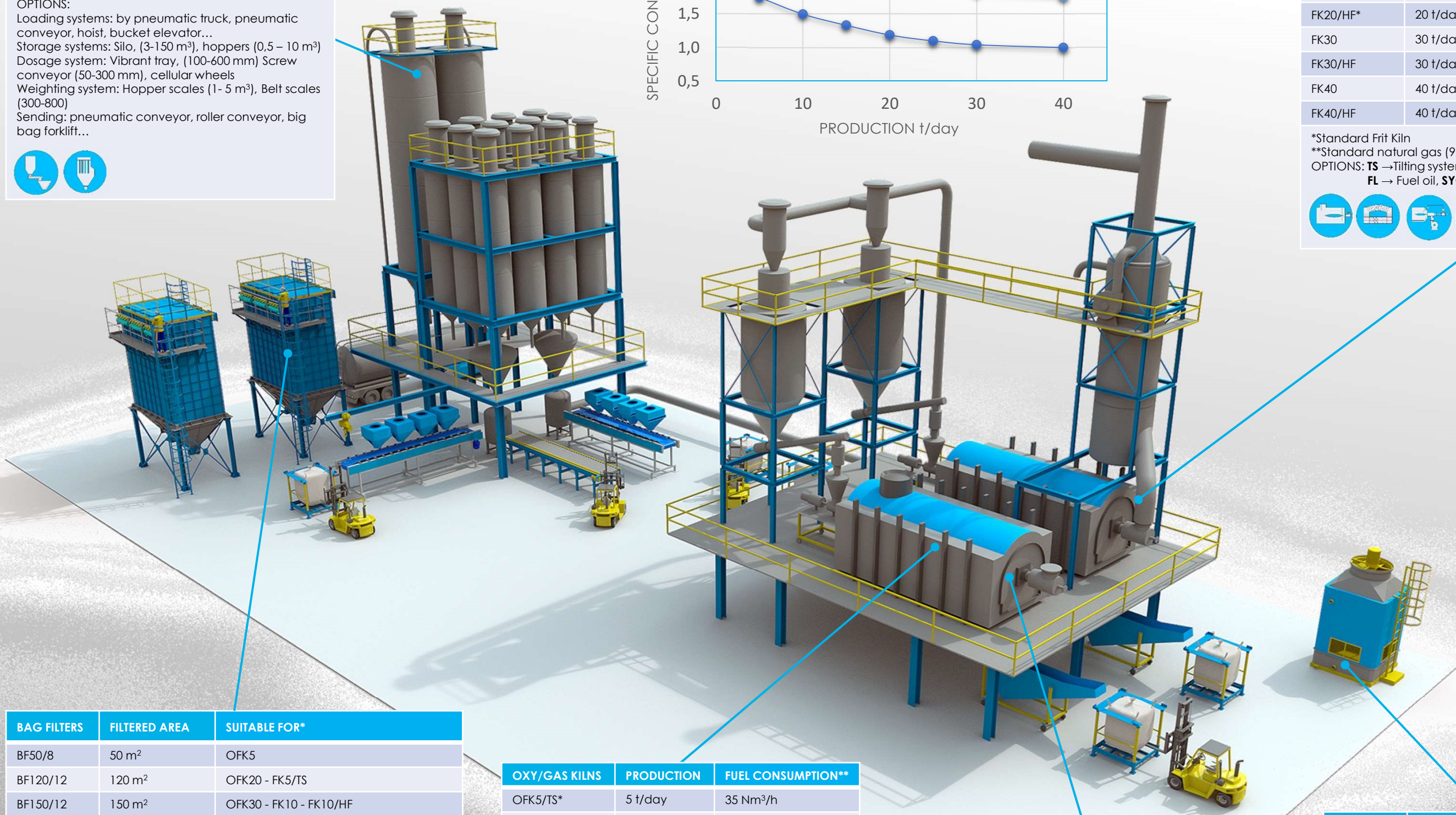
DOSAGE SYSTEM	AVAILABLE PRODUCTIONS
BATCH PLANT	4, 6, 8, 12, 16, 24 t/h
COMPOUNDS PLANT	4, 6, 8, 12, 16, 24 t/h
BATCH PLANT / COMPOUNDS	4, 6, 8, 12, 16, 24 t/h

OPTIONS:
 Loading systems: by pneumatic truck, pneumatic conveyor, hoist, bucket elevator...
 Storage systems: Silo, (3-150 m³), hoppers (0,5 – 10 m³)
 Dosage system: Vibrant tray, (100-600 mm) Screw conveyor (50-300 mm), cellular wheels
 Weighting system: Hopper scales (1- 5 m³), Belt scales (300-800)
 Sending: pneumatic conveyor, roller conveyor, big bag forklift...


AIR/GAS KILNS	PRODUCTION	FUEL CONSUMPTION**
FK5/TS*	4 t/day	65 Nm³/h
FK10	10 t/day	120 Nm³/h
FK10/HF	10 t/day	105 Nm³/h
FK20*	20 t/day	190 Nm³/h
FK20/HF*	20 t/day	168 Nm³/h
FK30	30 t/day	250 Nm³/h
FK30/HF	30 t/day	220 Nm³/h
FK40	40 t/day	320 Nm³/h
FK40/HF	40 t/day	280 Nm³/h

*Standard Frit Kiln
 **Standard natural gas (9200 kcal/Nm³) 10,6 kW/Nm³
 OPTIONS: **TS** → Tilting system, **HF** → High efficiency series
FL → Fuel oil, **SYG** → Syngas


BAG FILTERS	FILTERED AREA	SUITABLE FOR*
BF50/8	50 m²	OFK5
BF120/12	120 m²	OFK20 - FK5/TS
BF150/12	150 m²	OFK30 - FK10 - FK10/HF
BF215/12	215 m²	OFK40 - 2 x OFK20
BF430/12	430 m²	FK20 - FK20/HF
BF645/12	645 m²	FK30 - FK30/HF
BF850/15	850 m²	FK40 - FK40/HF

*Standard ratio for frits applications 0,8 m³/m²/min (at 200 °C)
 OPTIONS: **HT** → Up to 900°C (Ceramic elements) **OFL** → Offline clean mode,
IS → Isolated, **EX** → ATEX, **HX** → Heat exchanger cooling



OXY/GAS KILNS	PRODUCTION	FUEL CONSUMPTION**
OFK5/TS*	5 t/day	35 Nm³/h
OFK10	10 t/day	60 Nm³/h
OFK20*	20 t/day	100 Nm³/h
OFK30	30 t/day	140 Nm³/h
OFK40*	40 t/day	170 Nm³/h

*Standard frit kiln
 **Natural gas 10,6 kW/Nm³ (9200 kcal/Nm³)
 OPTIONS: **TS** → Tilting system



SODIUM SILICATE KILN	PRODUCTION	FUEL CONSUMPTION**
SK25	25 t/day	190 Nm³/h
SK40	40 t/day	250 Nm³/h

**Natural gas 10,6 kW/Nm³ (9200 kcal/Nm³)
 OPTIONS: **HF** → High efficiency series **OSK** → Oxy gas kilns.



COOLING SYSTEM	WATER FLOW	COOLING POWER*	SUITABLE FOR
CT24	24 m³/h	650 KW	2 x FK20
CT48	48 m³/h	1300 KW	4 x FK20
CT96	96 m³/h	2600 KW	8 x FK20

*Humid room temperature 27°C
 OPTIONS: **AD** → Adiabatic system

