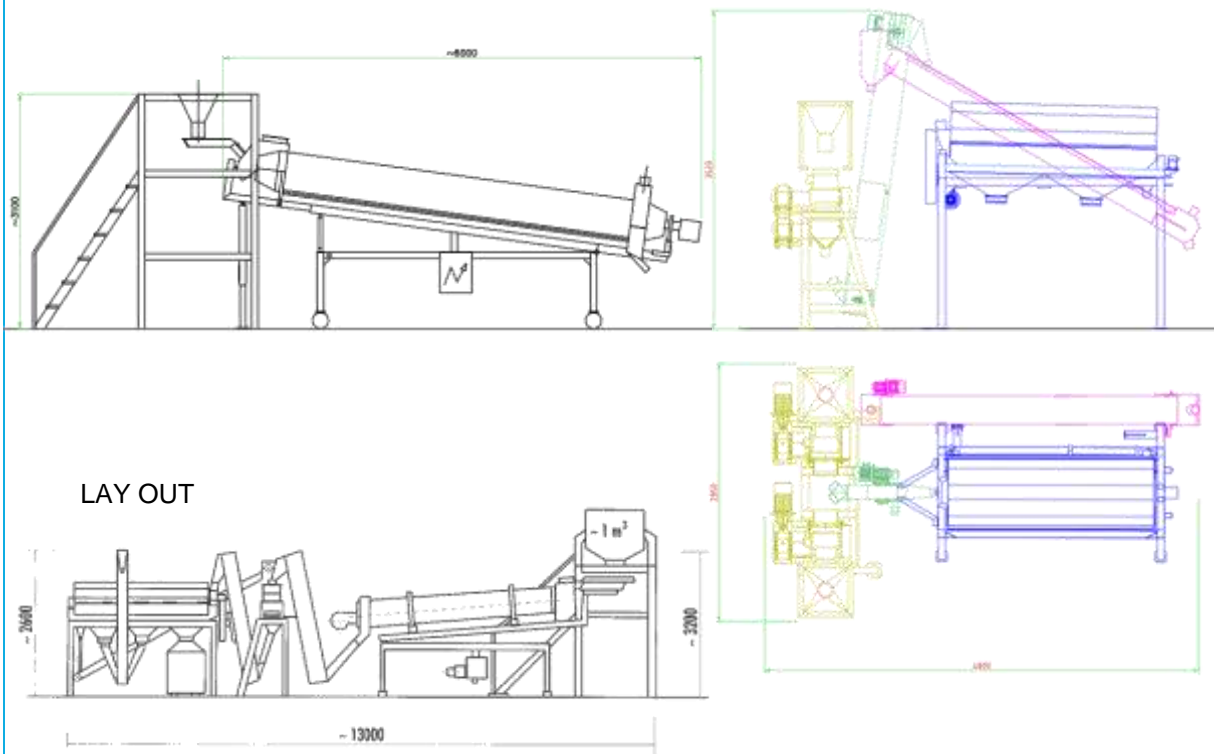


GR1000 GRANILLA PRODUCTION SYSTEM 1000 kg/h



**Characteristics
Características**

<p><i>Model / Modelo</i> <i>Description / Descripción</i></p>	<p>FMRS1000 Frit Mill & Rotatory Siever Equipment</p>
<p><i>Technical Characteristics</i> <i>Características técnicas</i></p>	<ul style="list-style-type: none"> • 2x Machine for milling normal, lamellar and sintered frits and enamels consisting of: <ul style="list-style-type: none"> – Painted steel structure; – Three pairs of rollers in tempered steel; 1st pair: toothed rollers for degreasing, 2nd pair: toothed rollers for shredding, 3rd pair: ground rollers for finishing; – Upper hopper in AISI 304 for feeding with vibrating channel. – Drive by two 4 kW geared motors. • Rollers' frame: Fired-painted iron structure to support rolls and vibrating channel. • 2x Vibrating channel L600mm in AISI 304 adjustable by inverter and multi-swing regulator with frame and feeding hoppers. • Rotary sieve for frits & enamels, consisting of: <ul style="list-style-type: none"> – Painted steel structure; – Net-holder basket set in galvanized steel; – Protection cabinet in AISI 304 with a two-part collection tray for discharging selected material and a third part for material to be returned to the milling machine. – Net-holder chassis fixed to the rotating basket. – Self-cleaning vibrating motor for selection nets; – Drive by 1 kW geared motor; – Suction inlets diam. 80 mm. Complete with enamel collection ducts. • Belt conveyor to transport the rejects from the sieve to the mill, consisting of: <ul style="list-style-type: none"> – Painted steel structure; – Conveyor belt L180 mm. pvc spondaflex type with containment edges and transversal slats; – Painted steel belt protection casing with upper door for inspection and suction inlet. – AISI 304 stainless steel belt discharge hopper; – Drived by 0,37 kW geared motor; – Suction inlets diam. 80 mm. Complete with Material collection ducts. • Plastic bucket elevator with brackets for fixing to rotary sieve. • Painted steel frame for BigBag loading. • Tested Control Panel for motor connection.

<p><i>Model / Modelo</i> <i>Description / Descripción</i></p>	<p>FRD1000 Frit Rotatory Dryer</p>
<p><i>Technical Characteristics</i> <i>Características técnicas</i></p>	<ul style="list-style-type: none"> • Rotatory dryer mounted on wheels for drying frits, consisting of: <ul style="list-style-type: none"> – Frame for cylinder in fire painted tubular steel with rotating wheels. – Cylinder in AISI 304 with longitudinal mixing blades. – Suction layer mounted on cylinder support frame. – Air burner with double flame device, fed by NG or LPG, with thermocouple and thermoregulator. – Cylinder rotation device driven by geared motor. – Variable cylinder inclination device controlled by geared motor. – Adjustable end-of-course couple to set cylinder inclination. – Iron fire painted frame for load bucket support. – Safety protections. – Vibrating channel in AISI 304 controlled by inverter for the regulation of frit flow with multi-rotating regulator. – Suction inlets diam. 300 and 115 mm. – Electric control panel built according to CE standards with installation at the machine edge.